

The Properties of Survey-Based Inflation Expectations in Sweden*

Thomas Jonsson[#]

Pär Österholm[♣]

* We are grateful to Meredithy Beechey and seminar participants at the National Institute of Economic Research and Sveriges Riksbank for valuable comments on this paper.

[#] National Institute of Economic Research, Box 3116, 103 62 Stockholm, Sweden
e-mail: thomas.jonsson@konj.se Phone: +46 8 453 59 34

[♣] National Institute of Economic Research, Box 3116, 103 62 Stockholm, Sweden
e-mail: par.osterholm@konj.se Phone: +46 8 453 59 72

NIER prepares analyses and forecasts of the Swedish and international economy and conducts related research. **NIER** is a government agency accountable to the Ministry of Finance and is financed largely by Swedish government funds. Like other government agencies, **NIER** has an independent status and is responsible for the assessments that it publishes.

The **Working Paper** series consists of publications of research reports and other detailed analyses. The reports may concern macroeconomic issues related to the forecasts of the institute, research in environmental economics, or problems of economic and statistical methods. Some of these reports are published in their final form in this series, whereas others are previews of articles that are subsequently published in international scholarly journals under the heading of **Reprints**. Reports in both of these series can be ordered free of charge. Most publications can also be downloaded directly from the **NIER** home page.

Abstract

This paper assesses the properties of survey-based inflation expectations in Sweden. The survey is conducted by Prospera once every quarter and consists of respondents from businesses and labour-market organisations. The paper shows that inflation expectations measured in this survey tend to be biased and inefficient forecasts of future inflation. Results also indicate that long-run inflation expectations are overly adaptive with respect to actual inflation. Finally, evaluations of forecast accuracy show that these inflation expectations are worse predictors of inflation than those of a professional forecasting institution and also typically outperformed by a simple autoregressive model. Overall, our results indicate that economic agents' expectations formation process is suboptimal and/or the survey fails to capture the true inflation expectations.

JEL Classification: E52

Keywords: Survey data, Inflation targeting

Contents

1. Introduction	7
2. Data	8
3. Empirical analysis	9
3.1 Unbiasedness and efficiency	10
3.2 Adaptivity	13
3.3 Forecast accuracy	16
4. Conclusions	19
Appendix	21

1. Introduction

After the Swedish fixed exchange rate regime was abandoned in November 1992, Sveriges Riksbank became one of the first central banks in the world to adopt inflation targeting. This policy regime has now been in place for more than fifteen years and has, in light of the relative stability the Swedish economy has enjoyed, broadly been judged a success.

The success of an inflation-targeting regime depends heavily on the inflation expectations of actors in the economy; inflation expectations that are well aligned with the inflation target facilitates achieving outcomes close to the target. However, even in an inflation-targeting regime, short-run inflation expectations should not be constant as the central bank cannot bring inflation back to its target immediately due to lags in the transmission mechanism. Moreover, in practice, no central bank practices what Svensson (2007) refers to as a “strict inflation targeting”.¹ Inflation will hence be brought back to the target more slowly than what would be the case if the central bank did not also care about output gap stability. This should of course be reflected in inflation expectations.

Sveriges Riksbank relies on survey-based measures of inflation expectations as part of its toolkit to gauge inflation expectations in Sweden. One of the more important survey-based measures is provided by the private company Prospera, on behalf of Sveriges Riksbank. Developments of the Prospera aggregates are generally cited in monetary policy reports. For example, in October 2009, the following was stated in the monetary policy report (Sveriges Riksbank, 2009):

“After having fallen over a period of one year, inflation expectations for one and two years’ ahead rose slightly, according to Prospera’s October survey. Looking one year ahead they are now 0.8 per cent, while at two years ahead the figure is 1.6 per cent. Inflation expectations five years ahead are at 2.2 per cent and are thus in line with the inflation target. Over the past decade they have at most been 0.5 percentage points off 2 per cent. This indicates that inflation expectations are firmly anchored. There are thus no signs that the recent very low inflation has reduced long-term inflation expectations significantly”.

Because of their role as a key indicator of expected inflation, in this paper we assess the properties of inflation expectations as surveyed by Prospera. The behaviour of inflation expectations in other countries has been explored in several studies.² This literature generally focus on two properties: The first of these is *unbiasedness*, that is, that inflation expectations are unbiased forecasts of future inflation. The second is *efficiency*, that is, that the expectations incorporate all available relevant in-

¹ Using the terminology coined by Mervyn King, no central bank is an “inflation nutter”.

² See, for example, Croushore (1997), Roberts (1997), Mehra (2002) and Mankiw *et al.* (2003). Thomas (1999) provides a survey of the literature.

formation. The reason attention is paid to these properties is that violations can be interpreted as inconsistent with forecasters having rational expectations. In this paper we perform tests on the Prospera inflation expectations data under the inflation-targeting regime. Results suggest that the expectations are biased and, at the shortest horizons, not efficient. Our econometric analysis further suggests that long-run inflation expectations show excessive co-movement with actual inflation, a finding that raises questions regarding how the inflation expectations are formed. Finally, the predictive ability of inflation expectations surveyed by Prospera is contrasted with those of a professional forecasting institution and a simple autoregressive model. It is shown that the forecast precision of the survey-based inflation expectations tend to be lower than both alternatives. Overall, our results indicate that the survey fails to capture the true inflation expectations and/or the expectations formation process has shortcomings.

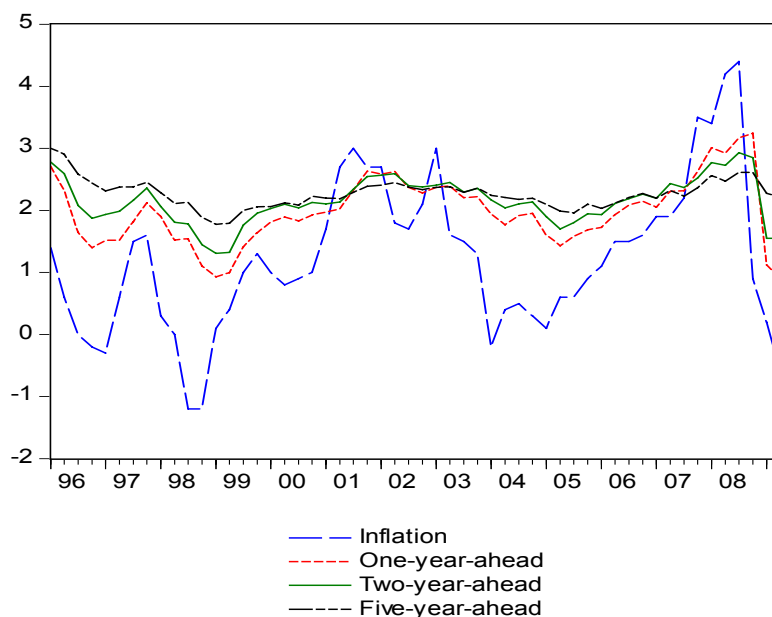
The remainder of this paper is organised as follows: Data are described in Section 2. In Section 3, the empirical analysis is conducted and the results are discussed. Section 4 concludes.

2. Data

Data on twelve-month-ended CPI inflation from 1996Q1 to 2009Q2 were provided by Statistics Sweden and are given in Figure 1. In the same figure, one-, two- and five-year ahead overall mean inflation expectations from Prospera are shown. Prospera conducts its survey on behalf of Sveriges Riksbank and provides the most ambitious survey concerning inflation expectations in Sweden. Prospera surveys 275 businesses and organisations once every quarter. The results of the survey are aggregated in an overall measure and into five subcategories: employee organisations, employer organisations, manufacturing companies, money market players and trade companies. Figures A1 to A3 in the Appendix show one-, two- and five-year mean inflation expectations by each subcategory. The inflation expectations are “forward rates” – that is, they measure twelve-month-ended inflation in 12, 24 and 60 months time.

The data on inflation expectations consist of 55 observations per series and are approximately quarterly. While the survey is conducted four times per year, the interval is not fixed. We discuss this issue further below when relevant.

Figure 1. CPI inflation and overall inflation expectations.



It can be seen from Figure 1 and Figures A1 to A3 that inflation expectations appear to vary over time with actual inflation and as would be expected, the expectations vary less the longer the horizon. But *how much* variation in expectations is reasonable at the different horizons surveyed here? The answer to this question is not obvious, but it can be noted that in a setting where the central bank's inflation target is credible – and where the central bank has a reasonably strong preference for stabilising inflation relative to the output gap – long-run inflation expectations should be very close to a constant; the five-year ahead expectations shown here can hardly be said to meet this criterion. Sveriges Riksbank (2007, p. 13) itself states that “*monetary policy is normally focused on achieving the inflation target within two years*”. In line with this statement, inflation reports and monetary policy reports almost without exception forecast that inflation will be back at a level close to the target within two to three years. Given Sveriges Riksbank's clear statement of its inflation target and what appears to be a strong commitment to bring inflation back to this target reasonably fast, the fact that five-year ahead inflation expectations seem to move around with actual inflation is surprising. We next investigate the empirical properties of the survey-based inflation expectations to – among other things – see whether the observed amount of time variation found can be motivated.

3. Empirical analysis

Our empirical analysis of the survey-based inflation expectations are divided into three different parts. First, tests for unbiasedness and efficiency are conducted. Second, the degree of adaptivity of the expectations is investigated. It is common in the literature to find evidence for adaptive (rather

than rational) inflation expectations and it is also a common modelling choice; see, for example, Phelps (1967), Roberts (1997), Rudebusch and Svensson (1999), Rudebusch (2002), Basdevant (2005). It hence seems reasonable to conduct such an exercise to provide further insight into potential shortcomings empirically of the expectations. Third, the predictive ability of the inflation expectations is contrasted with those of a professional forecasting institution and a simple autoregressive model. This comparison of forecast precision can be used to assess the properties of the expectations from another angle. For example, if the forecast precision of the expectations is substantially lower than that of the autoregressive model, one has to question how the expectations are formed (or measured) even if they have passed the tests for unbiasedness and efficiency.

3.1 Unbiasedness and efficiency

We employ a standard Mincer-Zarnowitz test (Mincer and Zarnowitz, 1969) for unbiasedness of expectations. This is based on the regression

$$\pi_{t+h} = \alpha_0 + \alpha_1 \pi_{t+h|t}^e + \varepsilon_t, \quad (1)$$

where π_{t+h} is the twelve-month-ended inflation rate at date $t+h$ and $\pi_{t+h|t}^e$ represents a measure of the inflation rate expected at date $t+h$, conditional on information available at date t . If inflation expectations are unbiased forecasts of inflation, then α_0 is zero and α_1 is one. It can be noted that the residuals will exhibit serial correlation due to the overlapping nature of the data. This is taken into account by employing Newey-West standard errors.

Three hypotheses are tested. $H_0 : \alpha_0 = 0$ and $H_0 : \alpha_1 = 1$ are tested using t -tests and the joint hypothesis $H_0 : \alpha_0 = 0, \alpha_1 = 1$ is tested using an F -test. Results are given in Table 1. These show that for all time horizons and all groups – except the five-year ahead expectations of employers and the one- and five-year ahead expectations of money market players – the composite null hypothesis can be rejected at the five percent level. This result might not come as a complete surprise; the literature on survey expectations tends to find evidence against unbiasedness; see, for example, Croushore (1997), Roberts (1997), Thomas (1999), Mehra (2002) and Mankiw *et al.* (2003). The finding of biased forecasts constitutes a violation of rational expectations under a symmetric quadratic loss function. Since we in practice never know the loss function of the forecasters, we do not make such a claim here but simply note that that this result should be considered a warning sign regarding the rationality of the formation of expectations.

Table 1. Results from estimation of equation (1).

One-, two- and five-year ahead inflation expectations

	$\hat{\alpha}_0$	$se(\hat{\alpha}_0)$	$\hat{\alpha}_1$	$se(\hat{\alpha}_1)$	$H_0: \alpha_0=0, \alpha_1=1$
1 year					
Overall	0.89	0.84	0.22	0.45	3.19*
Employee	1.10	0.78	0.11	0.42	3.64*
Employer	0.91	0.71	0.21	0.40	3.22*
Manufacturing	0.84	0.90	0.22	0.46	4.43*
Money market	0.86	0.69	0.26	0.43	1.85
Trade	0.95	0.90	0.18	0.47	3.73*
2 years					
Overall	3.19**	1.12	-0.80	0.48	12.47**
Employee	3.70**	1.02	-1.08**	0.46	13.55**
Employer	2.50*	0.97	-0.49	0.44	8.02**
Manufacturing	2.80	1.42	-0.58	0.55	14.23**
Money market	3.47**	1.16	-1.01	0.61	5.77**
Trade	2.80	1.42	-0.58	0.55	14.23**
5 years					
Overall	-3.27	1.65	2.14	0.73	5.51**
Employee	-2.64*	1.20	1.87	0.55	7.23**
Employer	-1.35	1.19	1.40	0.54	2.11
Manufacturing	-3.59*	1.37	2.17	0.58	8.76**
Money market	-3.06	1.84	2.20	0.85	2.87
Trade	-2.19	1.32	1.63	0.56	4.47*

Note: ** and * indicate significance at the one and five percent level respectively. The null hypotheses tested for the individual coefficients are $H_0: \alpha_0 = 0$ and $H_0: \alpha_1 = 1$. Regressions have 51, 46 and 34 observations at the one-, two- and five-year horizons.

We next turn to the issue of efficient use of macroeconomic data when forming inflation expectations. Standard macroeconomic models suggest that the unemployment rate should be useful when predicting future inflation.³ A parsimonious test of efficient use of data can therefore be based on the regression

$$\pi_{t+h} - \pi_{t+h|t} = \beta_0 + \beta_1 u_{t-1} + \beta_2 u_{t-2} + \beta_3 u_{t-3} + \beta_4 u_{t-4} + v_t, \quad (2)$$

where u_{t-1} is the unemployment rate three months before time t , u_{t-2} the unemployment rate six months before t and so on. The null hypothesis $H_0: \beta_1 = \beta_2 = \beta_3 = \beta_4 = 0$ is then tested using a standard F -test. The logic behind this test is simple: If variables that would be contained in a sophisticated model of inflation are significantly correlated with the forecast error, agents do not

³ The output gap is a variable of much importance in many models of inflation and it is related to the unemployment rate according to Okun's law. In addition, the unemployment rate is commonly used in more atheoretical models addressing questions concerning inflation and monetary policy; see, for example, Cogley and Sargent (2001), Primiceri (2005) and Ribba (2006).

make efficient use of information when forecasting. It should not be possible to improve forecasts using information available at time t .

Results are given in Table 2 and show that both the one- and two-year ahead inflation expectations do not sufficiently take into account the unemployment rate when formed. On the other hand, we find no significant effect of unemployment on the forecast errors of the five-year ahead inflation expectations. However, this insignificant effect at the longest horizon probably reflects the fact that the unemployment rate simply has no predictive power for inflation at very long horizons.

Table 2. Results from estimation of equation (2).

One-, two- and five-year ahead inflation expectations

	F
1 year	
Overall	3.86**
Employee	3.71*
Employer	3.47*
Manufacturing	3.75*
Money market	4.37**
Trade	3.71*
2 years	
Overall	5.19**
Employee	5.30**
Employer	4.53**
Manufacturing	4.96**
Money market	6.00**
Trade	4.99**
5 years	
Overall	2.11
Employee	1.96
Employer	2.29
Manufacturing	2.16
Money market	2.12
Trade	2.10

Note: F is the test statistic from the F-test of all slope coefficients in equation (2) being zero. ** and * indicate significance at the one and five percent level respectively. Regressions have 51, 46 and 34 observations at the one-, two- and five-year horizons.

The inefficient use of data at the shorter horizons found here is troublesome since it indicates empirical shortcomings of the expectations. This can have two reasons, which have different implications for policy makers who take them into account. First, the expectations formation process might be suboptimal. For example, inflation expectations might be formed in an adaptive rather than a rational way. This is an unwanted situation for the central bank since it makes it harder for it to achieve its goals. Second, it is possible that the survey is not capturing respondents' true inflation expectations. Survey-based measures of expectations are often criticised since the respondents have

small incentives to give well thought answers; see, for example, Wolfers and Leigh (2002) and Gürkaynak and Wolfers (2005). Clearly, if true inflation expectations are not captured by the survey, they should not be given too much weight in the central bank's policy considerations. There is otherwise a risk that policy decisions are not based on the relevant information.

3.2 Adaptivity

Above we looked at unbiasedness and efficiency and established that the survey-based data studied here tend to lack both of these properties. If this is due to a suboptimal formation of expectations, one possible explanation for our findings is that the expectations are too heavily influenced by what has happened in the recent past. We therefore next investigate to what extent inflation expectations are adjusted with respect to actual data. This is done by running the regression

$$\Delta\pi_{t+h|t}^e = \gamma_0 + \gamma_1\Delta\pi_t^L + \xi_t, \quad (3)$$

where Δ denotes the first difference operator and π_t^L is the latest actual inflation figure available from official statistical sources when expectations are surveyed.⁴ For example, in late January, the latest available twelve-month-ended inflation rate is that of December (since Statistics Sweden releases this number in mid-January). The regressor in equation (3) will hence be the twelve-month-ended inflation rate in December minus that in September.

The results are shown in Table 3. For all horizons and subcategories, the null of no co-movement between change in inflation and change in expectations is rejected. This suggests that there is a fair bit of co-movement in inflation expectations with actual inflation.

⁴ Note that we run the regression using first differences rather than levels to avoid the inference problems associated with the use of stationary, but highly persistent, variables in levels. See, for example, Phillips (1987).

Table 3. Results from estimation of equation (3).

One-, two- and five-year ahead inflation expectations

	$\hat{\gamma}_1$	$se(\hat{\gamma}_1)$
1 year		
Overall	0.31**	0.06
Employee	0.34**	0.08
Employer	0.35**	0.08
Manufacturing	0.34**	0.06
Money market	0.26**	0.06
Trade	0.31**	0.07
2 years		
Overall	0.19**	0.04
Employee	0.22**	0.06
Employer	0.21**	0.06
Manufacturing	0.23**	0.04
Money market	0.10**	0.03
Trade	0.19**	0.04
5 years		
Overall	0.09**	0.02
Employee	0.12**	0.02
Employer	0.11**	0.03
Manufacturing	0.11**	0.02
Money market	0.05**	0.02
Trade	0.10**	0.02

Note: ** and * indicate significance at the one and five percent level respectively.

Adaptivity does not necessarily mean that survey participants are irrational though. If inflation is persistent, it makes sense to revise forecasts in line with the shocks that arrive. In order to investigate whether the extent of the revisions in expectations is motivated by the inflation data, we specify an autoregressive model for actual inflation, where the AR(1) model:

$$\pi_t = \delta_0 + \delta_1 \pi_{t-1} + \chi_t, \quad (4)$$

appears to be the best representation according to the Schwarz (1978) information criterion.⁵ Based on the AR(1) model, we can compare the estimated persistence of the inflation data to the implied persistence based on the regressions in equation (4). The estimated persistence of the AR(1) model is given by the estimate of δ_1 in equation (4). Implied persistence for the model in equation (3) is calculated as $P = \hat{\gamma}_1 / e^h$, where h is the horizon of the expectation in quarters. To see the intuition behind this calculation, first recall that the impulse response at horizon h for the AR(1) model is given by $(\delta_1)^h$. It can then be noted that the coefficient γ_1 is similar to an impulse response since

⁵ The AR(1) model is estimated using data from 1996Q1 to 2009Q2. The data employed are from February, May, August and November each year since this is the timing which best approximates the slightly irregular dates of the survey.

it tells us how much the inflation expectation is revised in the light of a shock.⁶ Similarly, we can compare the half life based on the AR(1) model to the implied half life. The half life for the AR(1) process, H^δ , is calculated as $H^\delta = \ln(0.5)/\ln(\hat{\delta}_1)$ and the half life for the model in equation (3), H^γ , is given by $H^\gamma = \ln(0.5)/\ln(P)$. Results are found in Table 4 and first of all it can be noted that the AR(1) model estimates persistence to be 0.81. This means that the estimated half life of inflation is 3.2 quarters. As can be seen from Table 4, the implied half-lives for one-year horizon expectations are in line with that or even shorter. For the two-year horizon, the half life is also largely in line with what was estimated in the AR(1)-model, albeit generally somewhat higher (save for the money market players). This can be interpreted as the respondents having a degree of adaptivity at the shorter horizons which is consistent with the persistence that can be found in the data.

For the five-year horizon, however, the implied half life is substantially higher (1.5 to 3.6 quarters), than what was found in the data. This result suggests that the survey participants on average, when making their forecasts at the five year horizon and when observing changes in actual inflation, overestimates the persistence of the shock to the inflation rate.

Needless to say, the survey participants are unlikely to use a simple AR(1) model to forecast. However, the above analysis suggests that if they were, they would be using different estimates of persistence at the different horizons. That is obviously a peculiar feature and yet another cause for concern regarding the survey data.

The results in this subsection indicate that the time variation in one- and two-year ahead expectations is reasonable given the data. However, the same cannot be said about five-year ahead expectations. As an example, employee organisations revise the five-year ahead inflation expectation with 12 basis points when actual inflation changes by 100 basis points. Based on the persistence in the data – which according to the AR(1) model is 0.81 – a forecast should only be revised by one basis point in light of a 100 basis point shock. Rather than the fairly substantial variation in the five-year-ahead expectations shown in Figure A3, one would expect these to be close to constant if they were to be consistent with the persistence in the data.

⁶ It should be noted that using the change in inflation as the shock is an approximation to the true shock. However, using an AR(1) model – with a range of reasonable values of the autoregressive parameter – shows that our results are not sensitive to this assumption. The estimates of γ_1 are very similar in those cases. Results are not reported but are available upon request.

Table 4. Persistence and half life based on equation (4). Implied persistence and implied half life based on equation (3).

Actual inflation and one-, two- and five-year ahead inflation expectations

	Persistence	Implied persistence	Half-life	Implied half-life
Inflation	0.81		3.2	
1 year				
Overall		0.79		2.9
Employee		0.81		3.2
Employer		0.81		3.3
Manufacturing		0.81		3.2
Money market		0.76		2.5
Trade		0.79		2.9
2 years				
Overall		0.83		3.7
Employee		0.84		4.1
Employer		0.84		4.0
Manufacturing		0.85		4.3
Money market		0.77		2.7
Trade		0.83		3.7
5 years				
Overall		0.89		6.1
Employee		0.90		6.8
Employer		0.90		6.6
Manufacturing		0.90		6.6
Money market		0.86		4.7
Trade		0.89		6.2

3.3 Forecast accuracy

Our results so far show that the inflation expectations surveyed by Prospera tend to be biased and do not make efficient use of available macroeconomic data. It is also shown that the five-year-ahead expectations are overly adaptive. All of these findings could be interpreted as a lack of rationality in the expectation formation process. As the final stage in the assessment of the inflation expectations, we turn to the issue of forecast accuracy. This is done by comparing the forecasting performance of the Prospera respondents with that of other forecasters.

To begin with, we compare the forecast performance of the Prospera survey participants with that of the National Institute of Economic Research (NIER), a government agency making forecasts of the inflation rate in Sweden among other economic variables. Due to the real-time database available and the forecast horizon of the NIER, we are only able to compare the root mean square forecast errors (RMSFEs) at the one-year horizon for forecasts surveyed by Prospera between April

2001 and June 2008. The NIERs forecast is the official forecast made closest in time before the Prospera survey was conducted; this means that the NIER has an informational disadvantage of a touch less than two months on average. Results are shown in Table 5 and show that despite the informational disadvantage of the NIER, it has the lowest RMSFE.⁷

Table 5. RMSFEs from different forecasts.

One year	
NIER	1.28
Overall	1.53
Employee	1.53
Employer	1.53
Manufacturing	1.63
Money market	1.39
Trade	1.56

Note: RMSFEs are based on forecasts surveyed by Prospera from April 2001 to June 2008 and the matching forecasts from the National Institute of Economic Research. This means that 30 one-year-ahead forecasts are evaluated.

That the NIER outperforms the Prospera survey participants is perhaps not completely surprising. As was shown by Andersson and Aranki (2009), the NIER is one of the best forecasters of inflation in Sweden. Having initially chosen a benchmark that might be very hard to beat, we next turn to a comparison in which it should be easier for the expectations to come out on top, namely a purely model-based forecast. The model in question is a Bayesian AR(1) model which allows us to take the inflation target of Sveriges Riksbank into account; see Villani (2009) for technical details. The model is given by

$$\pi_t - \mu = \rho(\pi_{t-1} - \mu) + \zeta_t, \quad (5)$$

where μ is the steady state of the process. The prior for the steady-state rate of inflation is here given by a normal distribution with mean of 2 percent and where a 95 percent prior interval is given by (1.5, 2.5). From a forecasting point of view, the AR(1) model in equation (5) is highly likely to be a better tool than that of equation (4) since it provides a means to let institutional knowledge about the inflation target affect the level at which forecasts converge.⁸ We hence believe that it is a reasonable model on which to base the comparison to the survey-based expectations.

⁷ The difference in forecasting performance is also significant at the five percent level against employee organisations and manufacturing companies if a Diebold-Mariano test (Diebold and Mariano, 1995) assuming quadratic loss is conducted; results are not reported but are available upon request. Given the poor power of this test in small samples – see, for example, Hjalmarsson (2006) – this indicates that the difference in forecasting performance is substantial.

⁸ For empirical evidence concerning the benefits of this specification over the more traditional alternative, see Beechey and Österholm (2009a).

The data used for the out-of-sample forecast exercise are quarterly and, just like when persistence was estimated in Section 3.2, the February, May, August and November values each year are employed. When evaluating the expectations data, we compare the expectations of the first Prospera survey each year to the inflation rate in February the next year, the expectations from the second survey each year to the inflation rate in May the next year and so on. This means, since the survey is not conducted the same month each year, that we introduce a timing approximation error of roughly half a month on average. Comparisons to the AR(1) model using these data nevertheless should be informative since the approximation error is very small; at the longer horizons, it is negligible.

The out-of-sample forecast comparison is based on forecasts surveyed by Prospera from November 1999 to June 2008. This means that 35, 31 and 19 forecasts for the one-, two- and five-year horizons are evaluated. The model-based forecasts are generated using an expanding sample. The first forecast is generated using data from February 1996 to August 1999 and forecasts up to 21 periods ahead are generated. Forecasts for five, nine and twenty one quarters ahead are recorded and the associated forecast errors calculated.⁹ One quarter is then added to the sample, new forecasts generated and so on until the sample consists of data from February 1996 to February 2008 (where only the five-quarter-ahead forecast can be evaluated against data).¹⁰

Results from this out-of-sample exercise are found in Table 6. The AR(1) model performs best of all when evaluating the five-year horizon. At the two shorter horizons, it generates the second best forecast; money-market players are marginally better. Admittedly the number of observations is low, particularly at the five-year horizon, but these results serve as a clear indication that the survey expectations have problems. The AR(1) model is extremely simple and relies only on lagged inflation as data input. Categories other than money-market players should reasonably be expected to outperform the forecasts from this model, at least at the two shorter horizons.

⁹ Note that in real time, data on inflation in November is not available until mid-December and standing in November, we accordingly have to rely on data only up until August for the forecast. We therefore have to forecast five, nine and twenty one quarters ahead in order to get the relevant forecasts.

¹⁰ Estimating the model in equation (5) on the full sample, we get a posterior median estimate of 0.81 of the persistence; the estimate of the unconditional mean is 1.83. Using only the first half of the sample, that is, 1996Q1 and 2002Q3, we get 1.89 for the unconditional mean and 0.83 for the persistence. Hence, high persistence early on in the sample does not seem to be a rationale for high implicit persistence of the five-year-ahead survey data. (High persistence early on in the sample is not an unreasonable suspicion since Sveriges Riksbank perhaps lacked credibility in the early days of inflation targeting due to its previous lack of commitment to the fixed exchange rate regime.)

Table 6. RMSFEs from different forecasts.

	One year	Two years	Five years
AR(1)	1.21	1.30	1.21
Overall	1.27	1.42	1.34
Employee	1.29	1.41	1.30
Employer	1.27	1.39	1.27
Manufacturing	1.29	1.44	1.39
Money market	1.18	1.28	1.27
Trade	1.36	1.53	1.43

Note: RMSFEs are based on forecasts surveyed by Prospera from November 1999 to June 2008. This means that 35, 31 and 19 forecasts for the one-, two- and five-year horizons are evaluated.

4. Conclusions

In this paper, we have shown that inflation expectations in Sweden, as surveyed by Prospera, are neither unbiased nor efficient forecasts of inflation. Expectations at all horizons also show a fair degree of adaptivity. Evaluating out-of-sample forecasting performance, we find that participants in the Prospera survey generally perform worse than a professional forecasting institution and a simple autoregressive model. The exact causes of these features are unclear but we suggest two main explanations.

First, biased and inefficient expectations are generally considered to be a violation of rational expectations and we believe that these findings do indeed indicate that *the expectations formation process might be suboptimal*. It is true that biased forecasts still can be rational, for example if the forecasters have asymmetric loss functions; see Elliott *et al.* (2008). It is, however, hard to justify inefficient use of macroeconomic data. In addition, the time variation seen in five-year-ahead expectations is excessive. Rational arguments for a fair amount of variability in long-run inflation expectations exist. For example, if the central bank's inflation target is not credible – or if the central bank has a very strong preference for stabilising the real economy relative to inflation – one would expect rational agents to revise their long-run expectations in line with shocks to actual inflation.^{11, 12} Given the communication of Sveriges Riksbank, where there always has been a clear focus on achieving the target within two to three years, such explanations seem farfetched though. Moreover, the very high persistence that such explanations imply is not present in the actual inflation data.

¹¹ A moving inflation target is fairly common in the literature; see, for example, Beechey (2004) and Kozicki and Tinsley (2005). One could, for example, imagine that Sveriges Riksbank has an inflation target which can move as a random walk within the tolerance interval of ± 1 percent around the target of 2 percent. However, such a bounded random walk for the target seems to be a more reasonable description of the Reserve Bank of Australia, with its substantially more flexible description of its target, or the Federal Reserve, with its implicit inflation target, than Sveriges Riksbank.

¹² Clarida *et al.* (1999) show, using a standard model, that inflation persistence is a function of the relative preference for output stability. If this preference is strong, inflation may deviate from its target for extended periods. For a further discussion of this issue, see Beechey and Österholm (2007, 2009b).

Second, *the recorded inflation expectations might not be the respondents' true inflation expectations*. Criticism of survey-based measures of expectations is common and obviously applies also here. For example, no money is at stake in this survey and incentives to give well thought answers are hence low. It is therefore not unreasonable that the survey provides an imperfect measure of true expectations. Unfortunately, alternative indicators of inflation expectations are not flawless either, a fact which was made painfully clear during the recent financial crisis when, for example, flight-to-quality made the market-based break-even inflation rate a more or less useless measure of inflation expectations. So while survey-based inflation expectations might have shortcomings, we may still want to use them.

Our empirical analysis does not enable us to conclude whether the expectations process is suboptimal or the expectations mismeasured; the poor forecasting performance established above, for example, would be expected in both cases. In our opinion, it is not unlikely that both of these issues apply. Knowing the extent of the two would of course be interesting, particularly since they have different implications for the policy maker. Woodford (2004) describes central banking as the “management of expectations” and an expectations formation process that is flawed is not beneficial for the conduct of monetary policy. The policy rate may, for example, have to be varied more in order to stabilise the economy than would have been the case if expectations had been rational. If, on the other hand, true inflation expectations are not captured by the survey, policymakers should make sure to treat them as a noisy signal of true inflation expectations so that they are not misled in the decision process. Assessing the relative importance of a suboptimal expectations formation process and mismeasurement of expectations is an important next step for future research.

Appendix

Figure A1. One-year-ahead inflation expectations.



Figure A2. Two-year-ahead inflation expectations.



Figure A3. Five-year-ahead inflation expectations.

References

- Andersson, M. K. and Aranki, T. (2009), “Forecasters’ Ability – What Do We Usually Assess and What Would We Like to Assess?”, *Sveriges Riksbank Economic Review* 3/2009, 26-51.
- Basdevant, O. (2005), “Learning Process and Rational Expectations: An Analysis Using a Small Macro-Economic Model for New Zealand”, *Economic Modelling* 22, 1074-1089.
- Beechey, M. (2004), “Excess Sensitivity and Volatility of Long Interest Rates: The Role of Limited Information in Bond Markets”, Working Paper No. 173, Sveriges Riksbank.
- Beechey, M. and Österholm, P. (2007), “The Rise and Fall of US Inflation Persistence”, Finance and Economics Discussion Series 2007-26, Board of Governors of the Federal Reserve System.
- Beechey, M. and Österholm, P. (2009a), “Forecasting Inflation in an Inflation Targeting Regime: A Role for Informative Steady-State Priors”, Forthcoming in *International Journal of Forecasting*.
- Beechey, M. and Österholm, P. (2009b), “Time-Varying Inflation Persistence in the Euro Area”, *Economic Modelling* 26, 532-535.
- Clarida, R., Galí, J. and Gertler, M. (1999), “The Science of Monetary Policy: A New Keynesian Perspective”, *Journal of Economic Literature* 37, 1661-1707.
- Cogley, T. and Sargent, T. J. (2001), “Evolving Post-World War II U.S. Inflation Dynamics”, *NBER Macroeconomics Annual* 16, 331-373.
- Croushore, D. (1997), “The Livingstone Survey: Still Useful after All These Years”, *Federal Reserve Bank of Philadelphia Business Review*, 1-12.
- Diebold F. X. and Mariano R. S. (1995), “Comparing Predictive Accuracy”, *Journal of Business and Economic Statistics* 13, 253-263.
- Elliott, G., Komunjer, I. and Timmermann, A. (2008), “Biases in Macroeconomic Forecasts: Irrationality or Asymmetric Loss?”, *Journal of the European Economic Association* 6, 122-157
- Gürkaynak, R. and Wolfers, J. (2005), “Macroeconomic Derivatives: An Initial Analysis of Market-Based Macro Forecasts, Uncertainty and Risk”, In: Frankel, J. and Pissarides, C. (eds), *NBER International Seminar on Macroeconomics*, MIT Press, Boston.
- Hjalmarsson E. (2006), “Should We Expect Significant Out-of-Sample Results when Predicting Stock Returns?”, International Finance Discussion Papers No. 855, Board of Governors of the Federal Reserve System.
- Kozicki, S. and Tinsley, P. A. (2005), “Permanent and Transitory Policy Shocks in an Empirical Macro Model with Asymmetric Information”, *Journal of Economic Dynamics and Control* 29, 1985-2015.

- Mankiw, N. G., Reis, R., Wolfers, J. (2003), “Disagreements about Inflation Expectations”, *NBER Macroeconomics Annual* 18, 209-248.
- Mehra, Y. P. (2002), “Survey Measures of Expected Inflation: Revisiting the Issues of Predictive Content and Rationality”, *Federal Reserve Bank of Richmond Quarterly Review* 88, 17-36.
- Mincer, J. and Zarnowitz, V. (1969). “The Evaluation of Economic Forecasts” in Mincer, J. (ed), *Economic Forecasts and Expectations*, NBER, New York .
- Phelps, E. S. (1967), “Phillips Curves, Expectations of Inflation and Optimal Unemployment Over Time”, *Economica* 34, 254-281.
- Phillips, P. C. B. (1987), “Towards a Unified Asymptotic Theory for Autoregression”, *Biometrika* 74, 535-547.
- Primiceri, G. (2005), “Time Varying Structural Vector Autoregressions and Monetary Policy”, *Review of Economic Studies*, 72, 821–852.
- Ribba, A. (2006), “The Joint Dynamics of Inflation, Unemployment and Interest Rate in the United States Since 1980”, *Empirical Economics* 31, 497-511.
- Roberts, J. M. (1997), “Is Inflation Sticky?”, *Journal of Monetary Economics* 39, 176-196.
- Rudebusch, G. D. (2002), “Assessing Nominal Income Rules for Monetary Policy with Models and Data Uncertainty”, *Economic Journal* 112, 402-432.
- Rudebusch, G. D. and Svensson, L. E. O. (1999), “Policy Rules for Inflation Targeting”, In: Taylor, J. B. (ed), *Monetary Policy Rules*, University of Chicago Press, Chicago.
- Schwarz, G. (1978), “Estimating the Dimension of a Model”, *Annals of Statistics* 6, 461-464.
- Svensson, L. E. O. (2007), “Inflation Targeting”, In: Blum, L. and Durlauf, S. (eds), *The New Palgrave Dictionary of Economics*, Second Edition, Palgrave Macmillan, New York.
- Sveriges Riksbank (2007), *Monetary Policy in Sweden*.
- Sveriges Riksbank (2009), *Monetary Policy Report*, October 2009.
- Thomas, L. B., (1999) “Survey Measures of Expected U.S. Inflation”, *Journal of Economic Perspectives* 13, 125-144.
- Villani, M. (2009), “Steady State Priors for Vector Autogressions”, *Journal of Applied Econometrics* 24, 630-650.
- Wolfers, J. and Leigh, A. (2002), “Three Tools for Forecasting Federal Elections: Lessons from 2001”, *Australian Journal of Political Science* 37, 223-240.
- Woodford, M. (2004), “Inflation Targeting and Optimal Monetary Policy”, *Federal Reserve Bank of St. Louis Economic Review* 86, 15-41

Titles in the Working Paper Series

No	Author	Title	Year
1	Warne, Anders and Anders Vredin	Current Account and Business Cycles: Stylized Facts for Sweden	1989
2	Östblom, Göran	Change in Technical Structure of the Swedish Economy	1989
3	Söderling, Paul	Mamtax. A Dynamic CGE Model for Tax Reform Simulations	1989
4	Kanis, Alfred and Aleksander Markowski	The Supply Side of the Econometric Model of the NIER	1990
5	Berg, Lennart	The Financial Sector in the SNEPQ Model	1991
6	Ågren, Anders and Bo Jonsson	Consumer Attitudes, Buying Intentions and Consumption Expenditures. An Analysis of the Swedish Household Survey Data	1991
7	Berg, Lennart and Reinhold Bergström	A Quarterly Consumption Function for Sweden 1979-1989	1991
8	Öller, Lars-Erik	Good Business Cycle Forecasts- A Must for Stabilization Policies	1992
9	Jonsson, Bo and Anders Ågren	Forecasting Car Expenditures Using Household Survey Data	1992
10	Löfgren, Karl-Gustaf, Bo Ranneby and Sara Sjöstedt	Forecasting the Business Cycle Not Using Minimum Autocorrelation Factors	1992
11	Gerlach, Stefan	Current Quarter Forecasts of Swedish GNP Using Monthly Variables	1992
12	Bergström, Reinhold	The Relationship Between Manufacturing Production and Different Business Survey Series in Sweden	1992
13	Edlund, Per-Olov and Sune Karlsson	Forecasting the Swedish Unemployment Rate: VAR vs. Transfer Function Modelling	1992
14	Rahiala, Markku and Timo Teräsvirta	Business Survey Data in Forecasting the Output of Swedish and Finnish Metal and Engineering Industries: A Kalman Filter Approach	1992
15	Christofferson, Anders, Roland Roberts and Ulla Eriksson	The Relationship Between Manufacturing and Various BTS Series in Sweden Illuminated by Frequency and Complex Demodulate Methods	1992
16	Jonsson, Bo	Sample Based Proportions as Values on an Independent Variable in a Regression Model	1992
17	Öller, Lars-Erik	Eliciting Turning Point Warnings from Business Surveys	1992
18	Forster, Margaret M	Volatility, Trading Mechanisms and International Cross-Listing	1992
19	Jonsson, Bo	Prediction with a Linear Regression Model and Errors in a Regressor	1992
20	Gorton, Gary and Richard Rosen	Corporate Control, Portfolio Choice, and the Decline of Banking	1993
21	Gustafsson, Claes-Håkan and Åke Holmén	The Index of Industrial Production – A Formal Description of the Process Behind it	1993
22	Karlsson, Tohmas	A General Equilibrium Analysis of the Swedish Tax Reforms 1989-1991	1993

23	Jonsson, Bo	Forecasting Car Expenditures Using Household Survey Data- A Comparison of Different Predictors	1993
24	Gennotte, Gerard and Hayne Leland	Low Margins, Derivative Securites and Volatility	1993
25	Boot, Arnoud W.A. and Stuart I. Greenbaum	Discretion in the Regulation of U.S. Banking	1993
26	Spiegel, Matthew and Deane J. Seppi	Does Round-the-Clock Trading Result in Pareto Improvements?	1993
27	Seppi, Deane J.	How Important are Block Trades in the Price Discovery Process?	1993
28	Glosten, Lawrence R.	Equilibrium in an Electronic Open Limit Order Book	1993
29	Boot, Arnoud W.A., Stuart I Greenbaum and Anjan V. Thakor	Reputation and Discretion in Financial Contracting	1993
30a	Bergström, Reinhold	The Full Tricotomous Scale Compared with Net Balances in Qualitative Business Survey Data – Experiences from the Swedish Business Tendency Surveys	1993
30b	Bergström, Reinhold	Quantitative Production Series Compared with Qualitative Business Survey Series for Five Sectors of the Swedish Manufacturing Industry	1993
31	Lin, Chien-Fu Jeff and Timo Teräsvirta	Testing the Constancy of Regression Parameters Against Continuous Change	1993
32	Markowski, Aleksander and Parameswar Nandakumar	A Long-Run Equilibrium Model for Sweden. The Theory Behind the Long-Run Solution to the Econometric Model KOSMOS	1993
33	Markowski, Aleksander and Tony Persson	Capital Rental Cost and the Adjustment for the Effects of the Investment Fund System in the Econometric Model Kosmos	1993
34	Kanis, Alfred and Bharat Barot	On Determinants of Private Consumption in Sweden	1993
35	Kääntä, Pekka and Christer Tallbom	Using Business Survey Data for Forecasting Swedish Quantitative Business Cycle Variable. A Kalman Filter Approach	1993
36	Ohlsson, Henry and Anders Vredin	Political Cycles and Cyclical Policies. A New Test Approach Using Fiscal Forecasts	1993
37	Markowski, Aleksander and Lars Ernsäter	The Supply Side in the Econometric Model KOSMOS	1994
38	Gustafsson, Claes-Håkan	On the Consistency of Data on Production, Deliveries, and Inventories in the Swedish Manufacturing Industry	1994
39	Rahiala, Markku and Tapani Kovalainen	Modelling Wages Subject to Both Contracted Increments and Drift by Means of a Simultaneous-Equations Model with Non-Standard Error Structure	1994
40	Öller, Lars-Erik and Christer Tallbom	Hybrid Indicators for the Swedish Economy Based on Noisy Statistical Data and the Business Tendency Survey	1994

41	Östblom, Göran	A Converging Triangularization Algorithm and the Intertemporal Similarity of Production Structures	1994
42a	Markowski, Aleksander	Labour Supply, Hours Worked and Unemployment in the Econometric Model KOSMOS	1994
42b	Markowski, Aleksander	Wage Rate Determination in the Econometric Model KOSMOS	1994
43	Ahlroth, Sofia, Anders Björklund and Anders Forslund	The Output of the Swedish Education Sector	1994
44a	Markowski, Aleksander	Private Consumption Expenditure in the Econometric Model KOSMOS	1994
44b	Markowski, Aleksander	The Input-Output Core: Determination of Inventory Investment and Other Business Output in the Econometric Model KOSMOS	1994
45	Bergström, Reinhold	The Accuracy of the Swedish National Budget Forecasts 1955-92	1995
46	Sjöo, Boo	Dynamic Adjustment and Long-Run Economic Stability	1995
47a	Markowski, Aleksander	Determination of the Effective Exchange Rate in the Econometric Model KOSMOS	1995
47b	Markowski, Aleksander	Interest Rate Determination in the Econometric Model KOSMOS	1995
48	Barot, Bharat	Estimating the Effects of Wealth, Interest Rates and Unemployment on Private Consumption in Sweden	1995
49	Lundvik, Petter	Generational Accounting in a Small Open Economy	1996
50	Eriksson, Kimmo, Johan Karlander and Lars-Erik Öller	Hierarchical Assignments: Stability and Fairness	1996
51	Url, Thomas	Internationalists, Regionalists, or Eurocentrists	1996
52	Ruist, Erik	Temporal Aggregation of an Econometric Equation	1996
53	Markowski, Aleksander	The Financial Block in the Econometric Model KOSMOS	1996
54	Östblom, Göran	Emissions to the Air and the Allocation of GDP: Medium Term Projections for Sweden. In Conflict with the Goals of SO ₂ , SO ₂ and NO _x Emissions for Year 2000	1996
55	Koskinen, Lasse, Aleksander Markowski, Parameswar Nandakumar and Lars-Erik Öller	Three Seminar Papers on Output Gap	1997
56	Oke, Timothy and Lars-Erik Öller	Testing for Short Memory in a VARMA Process	1997
57	Johansson, Anders and Karl-Markus Modén	Investment Plan Revisions and Share Price Volatility	1997
58	Lyhagen, Johan	The Effect of Precautionary Saving on Consumption in Sweden	1998
59	Koskinen, Lasse and Lars-Erik Öller	A Hidden Markov Model as a Dynamic Bayesian Classifier, with an Application to Forecasting Business-Cycle Turning Points	1998

60	Kragh, Börje and Aleksander Markowski	Kofi – a Macromodel of the Swedish Financial Markets	1998
61	Gajda, Jan B. and Aleksander Markowski	Model Evaluation Using Stochastic Simulations: The Case of the Econometric Model KOSMOS	1998
62	Johansson, Kerstin	Exports in the Econometric Model KOSMOS	1998
63	Johansson, Kerstin	Permanent Shocks and Spillovers: A Sectoral Approach Using a Structural VAR	1998
64	Öller, Lars-Erik and Bharat Barot	Comparing the Accuracy of European GDP Forecasts	1999
65	Huhtala, Anni and Eva Samakovlis	Does International Harmonization of Environmental Policy Instruments Make Economic Sense? The Case of Paper Recycling in Europe	1999
66	Nilsson, Charlotte	A Unilateral Versus a Multilateral Carbon Dioxide Tax - A Numerical Analysis With The European Model GEM-E3	1999
67	Braconier, Henrik and Steinar Holden	The Public Budget Balance – Fiscal Indicators and Cyclical Sensitivity in the Nordic Countries	1999
68	Nilsson, Kristian	Alternative Measures of the Swedish Real Exchange Rate	1999
69	Östblom, Göran	An Environmental Medium Term Economic Model – EMEC	1999
70	Johnsson, Helena and Peter Kaplan	An Econometric Study of Private Consumption Expenditure in Sweden	1999
71	Arai, Mahmood and Fredrik Heyman	Permanent and Temporary Labour: Job and Worker Flows in Sweden 1989-1998	2000
72	Öller, Lars-Erik and Bharat Barot	The Accuracy of European Growth and Inflation Forecasts	2000
73	Ahlroth, Sofia	Correcting Net Domestic Product for Sulphur Dioxide and Nitrogen Oxide Emissions: Implementation of a Theoretical Model in Practice	2000
74	Andersson, Michael K. And Mikael P. Gredenhoff	Improving Fractional Integration Tests with Bootstrap Distribution	2000
75	Nilsson, Charlotte and Anni Huhtala	Is CO ₂ Trading Always Beneficial? A CGE-Model Analysis on Secondary Environmental Benefits	2000
76	Skånberg, Kristian	Constructing a Partially Environmentally Adjusted Net Domestic Product for Sweden 1993 and 1997	2001
77	Huhtala, Anni, Annie Toppinen and Mattias Boman,	An Environmental Accountant's Dilemma: Are Stumpage Prices Reliable Indicators of Resource Scarcity?	2001
78	Nilsson, Kristian	Do Fundamentals Explain the Behavior of the Real Effective Exchange Rate?	2002
79	Bharat, Barot	Growth and Business Cycles for the Swedish Economy	2002
80	Bharat, Barot	House Prices and Housing Investment in Sweden and the United Kingdom. Econometric Analysis for the Period 1970-1998	2002
81	Hjelm, Göran	Simultaneous Determination of NAIRU, Output Gaps and Structural Budget Balances: Swedish Evidence	2003

82	Huhtala, Anni and Eva Samalkovis	Green Accounting, Air Pollution and Health	2003
83	Lindström, Tomas	The Role of High-Tech Capital Formation for Swedish Productivity Growth	2003
84	Hansson, Jesper, Per Jansson and Mårten Löf	Business survey data: do they help in forecasting the macro economy?	2003
85	Boman, Mattias, Anni Huhtala, Charlotte Nilsson, Sofia Ahlroth, Göran Bostedt, Leif Mattson and Peichen Gong	Applying the Contingent Valuation Method in Resource Accounting: A Bold Proposal	
86	Gren, Ing-Marie	Monetary Green Accounting and Ecosystem Services	2003
87	Samakovlis, Eva, Anni Huhtala, Tom Bellander and Magnus Svartengren	Air Quality and Morbidity: Concentration-response Relationships for Sweden	2004
88	Alsterlind, Jan, Alek Markowski and Kristian Nilsson	Modelling the Foreign Sector in a Macroeconometric Model of Sweden	2004
89	Lindén, Johan	The Labor Market in KIMOD	2004
90	Braconier, Henrik and Tomas Forsfalt	A New Method for Constructing a Cyclically Adjusted Budget Balance: the Case of Sweden	2004
91	Hansen, Sten and Tomas Lindström	Is Rising Returns to Scale a Figment of Poor Data?	2004
92	Hjelm, Göran	When Are Fiscal Contractions Successful? Lessons for Countries Within and Outside the EMU	2004
93	Östblom, Göran and Samakovlis, Eva	Costs of Climate Policy when Pollution Affects Health and Labour Productivity. A General Equilibrium Analysis Applied to Sweden	2004
94	Forslund Johanna, Eva Samakovlis and Maria Vredin Johansson	Matters Risk? The Allocation of Government Subsidies for Remediation of Contaminated Sites under the Local Investment Programme	2006
95	Erlandsson Mattias and Alek Markowski	The Effective Exchange Rate Index KIX - Theory and Practice	2006
96	Östblom Göran and Charlotte Berg	The EMEC model: Version 2.0	2006
97	Hammar, Henrik, Tommy Lundgren and Magnus Sjöström	The significance of transport costs in the Swedish forest industry	2006
98	Barot, Bharat	Empirical Studies in Consumption, House Prices and the Accuracy of European Growth and Inflation Forecasts	2006
99	Hjelm, Göran	Kan arbetsmarknadens parter minska jämviktsarbetslösheten? Teori och modellsimuleringar	2006
100	Bergvall, Anders, Tomas Forsfalt, Göran Hjelm, Jonny Nilsson and Juhana Vartiainen	KIMOD 1.0 Documentation of NIER's Dynamic Macroeconomic General Equilibrium Model of the Swedish Economy	2007

101	Östblom, Göran	Nitrogen and Sulphur Outcomes of a Carbon Emissions Target Excluding Traded Allowances - An Input-Output Analysis of the Swedish Case	2007
102	Hammar, Henrik and Åsa Löfgren	Explaining adoption of end of pipe solutions and clean technologies – Determinants of firms' investments for reducing emissions to air in four sectors in Sweden	2007
103	Östblom, Göran and Henrik Hammar	Outcomes of a Swedish Kilometre Tax. An Analysis of Economic Effects and Effects on NOx Emissions	2007
104	Forsfält, Tomas, Johnny Nilsson and Juhana Vartianinen	Modellansatser i Konjunkturinstitutets medelfristprognoser	2008
105	Samakovlis, Eva	How are Green National Accounts Produced in Practice?	2008
107	Forslund, Johanna, Per Johansson, Eva Samakovlis and Maria Vredin Johansson	Can we by time? Evaluation. Evaluation of the government's directed grant to remediation in Sweden	2009
108	Forslund, Johanna Eva Samakovlis, Maria Vredin Johansson and Lars Barregård	Does Remediation Save Lives? On the Cost of Cleaning Up Arsenic-Contaminated Sites in Sweden	2009
109	Sjöström, Magnus and Göran Östblom	Future Waste Scenarios for Sweden on the Basis of a CGE-model	2009
110	Österholm, Pär	The Effect on the Swedish Real Economy of the Financial Crisis	2009
111	Forsfält, Tomas	KIMOD 2.0 Documentation of changes in the model from January 2007 to January 2009	2009
112	Österholm, Pär	Improving Unemployment Rate Forecasts Using Survey Data	2009
113	Österholm, Pär	Unemployment and Labour-Force Participation in Sweden	2009
114	Jonsson, Thomas and Pär Österholm	The Properties of Survey-Based Inflation Expectations in Sweden	2009